

# COMMANDO<sup>2</sup> XP<sup>®</sup>

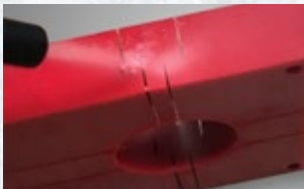
**EXTREME PRECISION. UNRIVALED VERSATILITY.**

The **COMMANDO<sup>®</sup> XP** Dry Ice Blaster is designed for precise and delicate cleaning applications in industrial environments such as plastics manufacturing, food and beverage processing, and medical device manufacturing. The machine features a 35 lb (16 kg) hopper, the BlitzFeed<sup>®</sup> freezeless dry ice delivery system and a pellet fragmenter for delicate cleaning.

- **Engineered for precision** — safely and effectively clean delicate surfaces and complex geometries
- **Dual-function machine** — does both precision and aggressive blasting with standard pellets
- **Included fragmenter shatters standard dry ice pellets** for delicate cleaning applications
- **Requires less air pressure** for operation, resulting in quieter blasting
- **Economical consumption of dry ice and compressed air** compared to larger blasters
- **Clean-in-place solution** — clean production equipment without disassembling
- **Automatic line clearing feature** when blasting is completed



## /// DRY ICE BLASTING APPLICATIONS



**PLASTIC & RUBBER MOLDS**

- Weld cell/automation cleaning
- Ventilation systems
- Paving equipment
- Tire and rubber molds
- Core boxes, aluminum molds
- Commercial printing presses



**PRODUCTION EQUIPMENT**

- Fire and historical restoration
- Mold remediation
- Paper mills and related manufacturing
- Electrical and power gen equipment
- Packaging
- Cemeteries and monuments



**FOOD & BEVERAGE**

- Removal of fiberglass resin
- Restaurants and bakeries
- Dry docking — commercial and military
- Commercial and military aircraft
- Wine barrels
- Graffiti removal



**AUTOMOTIVE PARTS**

## /// BLASTER SPECIFICATIONS

- **Dimensions:** 30" (762 mm) L x 19" (483 mm) W x 32" (813 mm) H
- **Weight:** 190 lbs (86 kg)
- **Hopper Capacity:** 35 lbs (16 kg)
- **Dry Ice Consumption:** 0 – 3 lbs/min (0 – 1.36 kg/min)
- **Blasting Pressure:** 20 – 150 psi (1.3 – 10.3 bar)
- **Compressed Air Connection:** 3/4" JIC Fitting
- Blast Gun and hose kits available for 5/8" or 3/4" hoses
- **Moisture Separator:** Included on machine
- **Controls:** Adjustable blasting pressure and pellet feed rate
- **Power:** 110 – 140V AC (50/60Hz) 4.8 A (220V model also available)
- **Noise Level:** 60 – 120 dB(A) (varies). Ear and eye protection required.
- **Warranty:** 1 Year Limited
- UL Listed, CE, CSA and TUV approved

## /// PACKAGE INCLUSIONS

Includes case & Operation Manual

Add-on Heavy Duty Blasting Gun Kit (with 1/2" high flow throughput) available



### /// WHITE PRECISION NOZZLE

35 CFM / 3/8" JIC connection

### /// BLUE PRECISION NOZZLE

50 CFM / 3/8" JIC connection



### /// BLACK PRECISION NOZZLE

70 CFM / 3/8" JIC connection

### /// PELLET FRAGMENTER

for delicate cleaning



### /// ICE SCOOP

### /// BLASTING GUN

with Pistol Grip Handle, Push-Button Safety & LED Light



### /// BLASTING HOSE

with Control Cable  
8 ft (2.4 m)



### /// COMMANDO® XP

with Blitzfeed®  
Freezeless Hopper Design



### /// HEAVY DUTY AIR SUPPLY HOSE

25 ft (7.62 m)

FOR THE COMPLETE LINE OF EQUIPMENT AND ACCESSORIES, PLEASE VISIT [NUICEBLASTING.COM](http://NUICEBLASTING.COM)