

# COMMANDO<sup>2</sup> XP<sup>®</sup>

**EXTREME PRECISION. UNRIVALED VERSATILITY.**

## GENTLE OR AGGRESSIVE CLEANING IN ONE DRY ICE BLASTING MACHINE

The **COMMANDO<sup>®</sup> XP** Dry Ice Blasting Machine is designed for precise and delicate cleaning applications in industrial environments such as plastics manufacturing, food and beverage processing, and medical device manufacturing. The machine features a 10 lb (4.5 kg) hopper, the BlitzFeed<sup>®</sup> freezeless dry ice delivery system and a pellet fragmenter for delicate cleaning.

- Engineered for precision — safely and effectively clean delicate surfaces and complex geometries
- Dual-function machine — does both precision and aggressive blasting with standard pellets
- Requires less air pressure for operation, resulting in quieter blasting
- Economical consumption of dry ice and compressed air in comparison to larger blasters
- Clean-in-place solution — clean production equipment without disassembling
- Automatic line clearing feature when blasting is completed



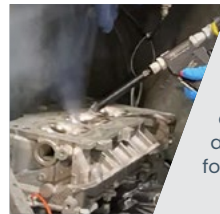
*8' hose and blasting gun included with machine. LED light included with optional HD blasting gun.*

**OPTIONAL BLASTING UTILITY CART AVAILABLE!**



### DUAL-FUNCTION FOR MAXIMUM VERSATILITY

Included fragmenter shatters standard dry ice pellets for delicate cleaning applications. Remove the fragmenter and add on the optional HD blasting gun for aggressive blasting with full size pellets.

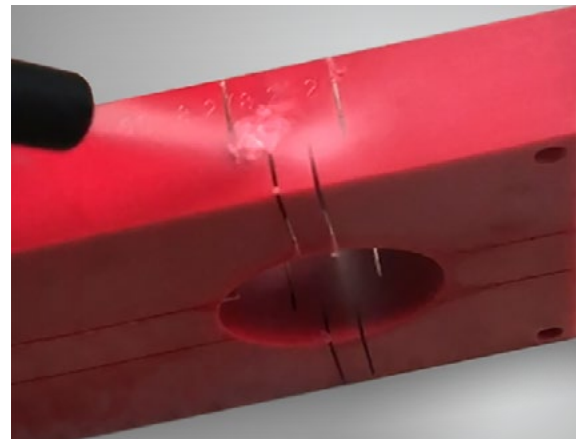


### CLEAN COMPLEX GEOMETRIES WITH EASE!

Precision nozzles are designed for cleaning complex geometries, tight spaces and areas that are difficult to reach with larger machines. Excellent for plastic molds and machine compartments.

## SPECIFICATIONS

- **Dimensions:** 30" (762 mm) W x 25" (635 mm) H x 19" (483 mm) D
- **Weight:** 130 lbs (59 kg)
- **Hopper Capacity:** 10 lbs (4.5 kg)
- **Dry Ice Consumption:** ½ – 2 lb/min on Micro Cleaning; 1½ – 2¼ lb/min on Aggressive Cleaning
- **Dry Ice Required:** Standard dry ice pellets (fragmenter included)
- **Operating Range:** 15 – 125 psi (1 – 8.6 bar)
- **Blasting Pressure:** 15 – 125 psi (1 – 8.6 bar)
- **Compressed Air Connection:** 1/2" JIC Fitting
- **Adjustable blast pressure and pellet feed rate**
- **Power:** 110 – 140V AC (50/60Hz) 4.8 A
- **Warranty:** 1 Year Limited



*The COMMANDO<sup>®</sup> XP is an excellent solution for plastics. Dry ice blasting was used to quickly and efficiently deburr the part without causing surface damage.*

## INCLUDED WITH EACH MACHINE:

- Dry ice blasting unit
- 8 ft (2.4m) x 1/2" blasting hose
- 25 ft (7.6m) x 1/2" air supply hose
- Blasting gun (3/8" through-put) with with Low, Medium and High flow precision nozzles (one of each)
  - Add-on Heavy Duty Blasting Gun Kit (with 1/2" high flow throughput) available
- Pellet Fragmenter for delicate cleaning applications
- Ice scoop
- Operation Manual

## AVAILABLE BLASTING NOZZLES & ACCESSORIES

Additional nozzles may be available

### STANDARD NOZZLES (INCLUDED WITH MACHINE)



**WHITE PRECISION NOZZLE**  
35 CFM / 3/8" JIC connection



**BLUE PRECISION NOZZLE**  
50 CFM / 3/8" JIC connection



**BLACK PRECISION NOZZLE**  
70 CFM / 3/8" JIC connection



**PELLET FRAGMENTER**  
Fragments standard dry ice pellets for delicate cleaning applications. Included with all new machines.



### XP BLASTING UTILITY CART

The COMMANDO® XP Blasting Utility Cart is a highly recommended accessory that turns the machine into a ready-to-clean mobile blasting unit. The blast cart includes:

- Secure mounting surface for the COMMANDO® XP
- Dry ice tote in convenient storage cabinet
- Tool storage compartment
- Heavy duty wheels
- Hanging hooks for hoses and accessories

### HD GUN AND NOZZLE KIT



The optional HD Gun and Nozzle Kit allows for more aggressive blasting with the XP, turning it into the ultimate dual-function machine! Includes:

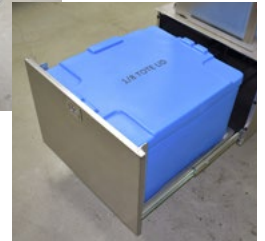
- Commando® XP HD Blast Gun with 1/2" throughput and LED light (IB20GAXP-HD)
- 6" x 1" Fan Nozzle (IBNPC004)
- 7" x 1 3/8" Fan Nozzle (IBNPC005)
- 15' x 1/2" Blast Hose Assembly (IB21GH5015)



**AGGRESSIVE FAN NOZZLE – NARROW**  
125 CFM / 80 psi  
1/2" JIC



**AGGRESSIVE FAN NOZZLE – WIDE**  
150 CFM / 80 psi  
1/2" JIC



Tool storage compartment and included dry ice tote



## COMMANDO® XP APPLICATIONS *Ideal for plastic molds, auto detailing and more!*

- Plastics manufacturing, including cleaning of injection molds, blow molds, compression molds and more
- Plastics deburring and part cleanup
- Auto detailing, including cleaning engines, engine compartments and undercarriages
- Food and beverage processing
- Medical device manufacturing
- Historical restoration
- Refurbishing production equipment
- Delicate cleaning of sensitive electrical equipment and controls
- Cleaning items with complex geometries and hard to reach areas
- Surface preparation on small parts